

# Early cancer detection saves lives

At Check4Cancer we deliver awareness and early detection services that will protect your business and employees.

More often than not a cancer check will provide you with nothing more than peace of mind, but it could save your life.



Clinically led and validated services



Simple sign up and access to a full personalised screening service



Rapid access appointments and fast results



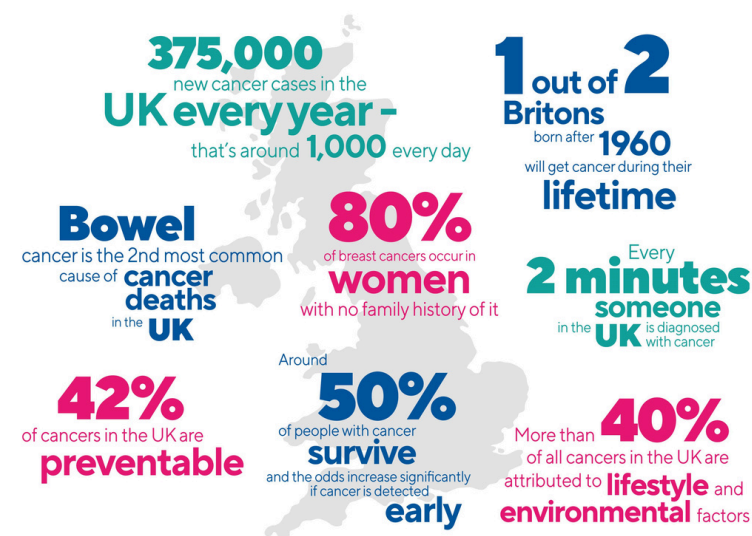
Onward support, advice and referrals from clinical experts

Screening tests are only suitable for individuals with no symptoms.

Your Campaign can be bespoke to suits your needs.

## What's included?

- ✓ A dedicated Account Manager
- ✓ MI Data
- ✓ Free Introductory Webinar and Marketing Support
- ✓ A co-branded microsite for sign-ups



# Fast access cancer screenings

Our screenings cover six common cancers in the UK;  
Bowel, Breast, Prostate, Lung, Cervical & Skin cancer.



No need for a GP visit



5 of the 8 screenings can be done  
from the comfort of your own home



Nationwide clinics with fast &  
accurate results



Onward support, advice and  
referrals from clinical experts

*Screening tests are only suitable for individuals with no symptoms.*



## BowelCheck

For people aged 45+  
Advanced laboratory qFIT

**Results in 1 week**  
Cost £86



## PSACheck

For men aged 40+  
Test for Free\* and Total PSA  
(prostate specific antigen)

\*free PSA is only provided by our  
laboratory for elevated results

**Results in 1 week**  
Cost £86



## HPVCheck

For women aged 25+  
No internal examination

HPV screening is now  
endorsed by the NHS

**Results in 1 week**  
Cost £97



## MyBreastRisk\*

Understand your lifetime risk  
of developing breast cancer

For women aged 30+  
Results of Lifetime Risk of  
developing breast cancer  
and a personalised screening  
programme based on the  
woman's personal risk of  
developing breast cancer

Anyone considered to be within  
the 'High Risk' group will be  
offered a free genetic  
counselling session to discuss  
specific risk reduction strategies  
or further genetic testing.

**Results in 8 weeks**  
Cost £309



## Online BreastRisk

For women aged 18+  
showing NO signs of breast  
cancer

Online BreastRisk includes a  
personal breast cancer risk  
assessment.

The specialist breast  
cancer nurse will discuss  
your personal breast  
cancer risk from your  
assessment results and  
provide advice on how you  
can reduce your risk. The  
nurse will educate you  
on how to self examine your  
breasts and signpost you to  
typical abnormalities and  
symptoms to be aware of.  
You will be sent a monthly  
email reminder to be  
breast aware.

**Results in 1 week**  
Cost £150



## SkinCheck

For people aged 18+  
High quality images  
taken by specialist skin  
cancer nurses.  
Suspicious moles/skin  
changes reported by  
consultant skin cancer  
specialists.  
Professional guidance  
on protecting skin.

**Results in 1 week**  
Cost £198\*



## LungCheck

For people aged  
between 50-80 years  
with a strong smoking history  
(20 pack per day over 20 years)  
(this does not apply to previous smokers  
who have ceased smoking for 15 years  
or longer)  
LungCheck is a chest

CT scan  
Annual CT scans  
(until reaching 15yrs of being  
a non smoker)

The below is an introductory  
price for LungCheck

**Results in 3-4 weeks**  
Cost £699\*\*



## Mammogram

showing NO signs or  
symptoms of breast cancer

### How often can you have a screening mammogram?

Check4Cancer can offer  
women aged 40- 49 years a  
private screening  
mammogram annually  
(unless you have had a  
mammogram within the last  
12 months).

Women aged 50+ can  
have a mammogram  
every two years.  
NB: The NHS offers  
women aged 50-70  
mammograms every  
three years.

**Results in 3-4 weeks**  
Cost £275\*

**More often than not a cancer check will provide you with nothing more than peace of mind, but it could save your life**

\*Not suitable for women who have been diagnosed with breast cancer, including women with triple-negative or bilateral breast cancer, and those diagnosed under age 45. Breast SNP tests are based on a cohort of Caucasian European patients. Published data in August 2021 has confirmed breast SNP tests should not be used to predict risk in women of other ethnicities. Check4Cancer therefore only recommends our SNP test for Caucasian European ethnicities.

\* Excludes pricing for Belfast Skin Clinics and Mammograms. Glasgow Mammograms included for Flex only.  
\*\* Excludes pricing for Belfast and Glasgow LungCheck.