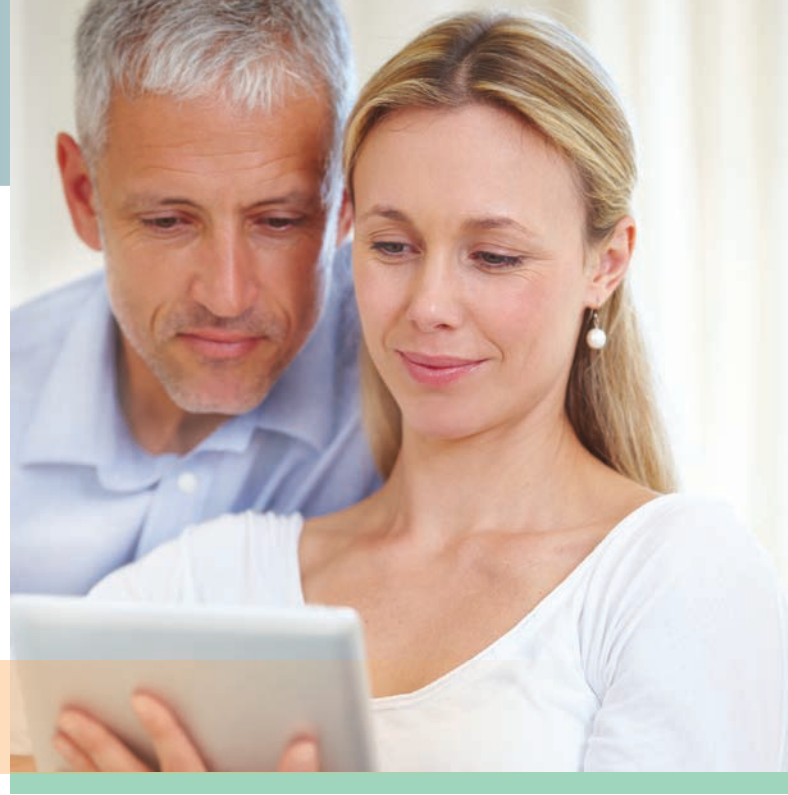


More than 41,000 men and women are diagnosed with bowel cancer each year in the UK



## BowelCheck

This year alone over 16,000 patients will die of bowel cancer, making it the second most common cause of cancer deaths in the UK. Smoking is the new smoking. It is a disease that can affect both men and women and if detected in the early stages is highly treatable, with a 90% cure rate.

Whilst the NHS runs a screening programme for people aged 60+ (Scotland aged 50+), our programme starts at aged 45+. BowelCheck incorporates the latest immunohistochemistry technology which is very sensitive and can be carried out in the comfort and privacy of the home.

### What is BowelCheck?

An online bowel cancer risk assessment questionnaire and an advanced, yet easy to use, at-home testing kit with highly accurate fast results. The test looks for signs of digested human blood in the stools (or poo) as this can be a sign of bowel cancer. Once the employee has completed the test, they simply return it in the pre-paid envelope.

### When will the results be available?

Within 5 days of their sample arriving in our laboratory employees will receive a results letter and a personalised screening programme. Should an employee have an abnormal test result they may be eligible for referral to a private consultant (if they have PMI and we have engaged with the PMI company beforehand) or to the NHS via their GP. We telephone anyone with an abnormal test result in advance of receiving their letter to explain their options and reduce any anxiety.

### Why will it benefit your employees?

If bowel cancer is detected in the early stages it is highly treatable, with a 90% cure rate. If their result is normal it will give them peace of mind and recommendations for future screening. Everyone will benefit from education and awareness around bowel cancer by visiting our website.

### Which employees will benefit?

- Men and women aged over 45 +/- family history of bowel cancer
- All employees will benefit from bowel health awareness
- People aged 45+ with a history of bowel polyps or inflammatory bowel disease



To enquire



0800 085 6663



Info@Check4Cancer.com



www.Check4Cancer.com